

# STORM Mobile

## MULTI I/O PROCESSOR

Capture anything, edit anywhere. STORM Mobile gives you the freedom to edit wherever your work takes you—in the studio or on location.



STORM™ Mobile from Grass Valley™ strengthens the EDIUS® Pro 6.5 NLE's real-time field editing capability by providing a variety of inputs and outputs using either PCIe 1X card for desktops or an ExpressCard/34 card for laptops, with several configurations to choose from.

STORM Mobile's comprehensive video editing interface breakout box is equipped with an HDMI I/O (for video formats up to 1080i), analog component, analog composite, S-Video, and unbalanced audio for the ultimate in connectivity.

While the STORM Mobile desktop PCIe 1X card supplies power to the STORM Mobile breakout box, an AC adapter is supplied for laptop ExpressCard/34 card operation.

The STORM Mobile chassis is available in two versions: an internal PC 5-inch drive bay type and an external breakout box type. The breakout box can be easily be converted into a 5-inch bay type by the user.

STORM Mobile also offers several additional hardware benefits. The integrated hardware downconversion function is handy when you are editing HD but want to make sure your picture is good in SD, such as when creating DVDs. Downconversion is hardware-based, so the process doesn't use any CPU power, and has no affect on editing performance.

### Super High-Quality Capture from Camera Through Output

By using the HDMI output of your camcorder, you can capture video with STORM Mobile at higher quality (HQ mode: 4:2:2, I-Frame, 150 Mb/s) than with outputting AVCHD (4:2:0, Long GOP, 18 Mb/s). This is very useful when creating footage for keying work. MXF capture with MPEG-2 (XDCAM compatible) or AVC-Intra (P2 compatible) is also available.

### Real-Time Display Streamlines Workflows

STORM Mobile's enhanced real-time monitoring capability gives you separate composite outputs which always show an SD picture regardless of the resolution used for editing. STORM Mobile always outputs a true, native resolution picture without any frame skipping or degradation.

### Make the Most of Old VHS, Video8, and Hi8 Assets

STORM Mobile leverages the three-dimensional Y/C separation used in the ADVC-300 converter, which means you can capture old analog formats at the best possible picture quality.

### Audio Monitoring

STORM Mobile has a separate headphone output with a digital amplifier which is always available while editing, providing you with the best monitoring experience available.

## KEY FEATURES

- HDMI input/output for connectivity with HDMI devices and real-time monitoring from the included EDIUS Pro 6.5 NLE software (where included – see Ordering Information, Windows 7 (32-bit or 64-bit) required)
- Component, S-Video, and composite analog video I/O
- 8-channel embedded audio through HDMI
- Unbalanced stereo analog audio I/O
- Hardware downconversion to monitor HD project in an SD monitor at the same time
- PCIe 1X card for desktop PC connection with power supply function
- ExpressCard/34 card for laptop PC connection
- Available in breakout box version as well as 5-inch drive bay mounted version
- 5V DC operation
- Windows 7 (32-bit or 64-bit), Windows Vista (32-bit or 64-bit), and Windows XP (32-bit) support for hardware-only configurations (configurations including EDIUS Pro 6.5 require Windows 7, 32-bit or 64-bit)

**SPECIFICATIONS**

**SUPPORTED CAPTURE FORMATS**

Format	HDMI	Component	S-Video/ Composite
1920x1080 59.94i	x	x	
1440x1080 59.94i	x	x	
1280x720 59.94p	x	x	
720x480 59.94p 4:3	x*1		
720x480 59.94p 16:9	x*1		
720x486 59.94i 4:3		x	x
720x486 59.94i 16:9		x	x
720x480 59.94i 4:3	x	x	x
720x480 59.94i 16:9	x	x	x
1920x1080 50i	x	x	
1440x1080 50i	x	x	
1280x720 50p	x	x	
720x576 50p 4:3	x*1		
720x576 50p 16:9	x*1		
720x576 50i 4:3	x	x	x
720x576 50i 16:9	x	x	x

Note: STORM Mobile will NOT capture analog video protected by Macrovision or CGMS-A.

\*1 SD progressive video is captured as interlaced video.

**STORM MOBILE I/O**

Video in	
HDMI	1
HD/SD component	1
S-Video	1 (common connector w/component)
Composite	1
Video out	
HDMI	1
HD/SD component	1
S-Video	1 (common connector w/component)
Composite	1
Audio in	
HDMI embedded	8 channels
Unbalance audio (RCA pin)	2 channels
Audio out	
HDMI embedded	8 channels
Unbalance audio (RCA pin)	2 channels
Headphone	1 (stereo mini jack)

**Bus Interface**

PCI Express Rev. 1.1 x1 lane or ExpressCard/34 card

**Dimensions (WxHxD)**

- External model: 165 mm x 42 mm x 142 mm (6.5 in. x 1.7 in. x 5.6 in.)
- Bay model: 148 mm x 42 mm x 142 mm (5.8 in. x 1.7 in. x 5.6 in.)

**Weight**

- External model: 1,200g (42.3 oz.)
- Bay model: 800g (28.2 oz.)

**Minimum System Requirements (STORM Mobile Hardware)**

**Bus Interface**

**STORM Mobile Bay Unit or STORM Mobile Breakout Box with PCIe Card:**

- One free PCI Express x1 bus slot

**STORM Mobile Breakout Box with ExpressCard/34 Card:**

- One free ExpressCard/34 card slot

**Operating System**

**STORM Mobile Standalone:**

- Windows 7 (32-bit or 64-bit)
- Windows Vista (SP2 or later, 32-bit or 64-bit)
- Windows XP (SP3 or later, 32-bit)

**STORM Mobile with EDIUS Software:**

- Windows 7 (32-bit or 64-bit)

**Minimum System Requirements (EDIUS Software)**

**CPU**

Any Intel Core 2 or Core iX CPU. Intel or AMD single core CPU with a 3 GHz processor speed or faster (multiple CPUs and/or multi-core CPUs are recommended). SSE2 and SSE3 instruction set supported

**Memory**

1 GB RAM (4 GB or more recommended)

**Hard Disk**

- 6 GB of hard disk space is required for installation (including third-party software)
- Drive with ATA100/7,200 RPM or faster is necessary for video storage:
  - Available HDD disc space should be twice the size of the file to be edited
  - RAID-0 is recommended for HD resolution editing

**Graphics Card**

A graphics card supporting higher resolution than 1024x768 (32-bit), Direct3D 9.0c or later, and PixelShader Model 3.0 or later is required

- For SD editing: 256 MB or larger required, 512 MB or larger recommended
- For HD editing: 512 MB or larger required, 1 GB or larger recommended

**Sound Card**

A sound card with WDM driver support is required

**DVD-ROM Drive**

- Required for software installation
- Blu-ray Disc writer, DVD-R/RW or DVD+R/RW drive is required when creating Blu-ray Discs or DVDs

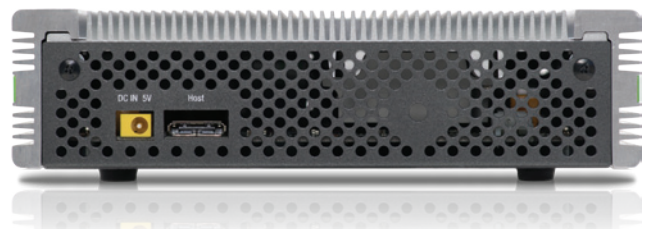
**Internet Connection**

Required for software license activation

**Operating System**

Windows 7 (32-bit or 64-bit)

Note: External video decks/cameras may require either a free FireWire (IEEE 1394) port or USB 2.0 port for connectivity.



**SUPPORTED OUTPUT FORMATS**

Format	HDMI Out	Component Out	S-Video/Composite Out
1920x1080 59.94i	1920x1080/59.94i	1920x1080/59.94i or 720x486/59.94i*2	720x486/59.94i*2
1920x1080 29.97p over 59.94i			
1440x1080 59.94i			
1440x1080 29.97p over 59.94i			
1280x1080 59.94i			
1280x1080 29.97p over 59.94i			
1280x720 59.94p	1280x720/59.94p	1280x720/59.94p or 720x486/59.94i*2	720x486/59.94i*2
1280x720 29.97p over 59.94p			
960x720 59.94p			
960x720 29.97p over 59.94p			
1920x1080 29.97p	1920x1080/29.97p	1920x1080/29.97p	Disabled
1440x1080 29.97p			
1280x1080 29.97p			
720x486 59.94i 4:3	720x480/59.94i → 720x480/59.94p*1	720x486/59.94i	720x486/59.94i
720x486 59.94i 16:9			
720x486 29.97p over 59.94i 4:3			
720x486 29.97p over 59.94i 16:9			
720x480 59.94i 4:3 (DVD)			
720x480 59.94i 16:9 (DVD)			
720x480 59.94i 4:3			
720x480 59.94i 16:9			
720x480 29.97p over 59.94i 4:3			
720x480 29.97p over 59.94i 16:9			
1920x1080 50i	1920x1080/50i	1920x1080/50i or 720x576/50i*2	720x576/50i*2
1920x1080 25p over 50i			
1440x1080 50i			
1440x1080 25p over 50i			
1280x720 50p	1280x720/50p	1280x720/50p or 720x576/50i*2	720x576/50i*2
1280x720 25p over 50p			
960x720 50p			
960x720 25p over 50p			
1920x1080 25p	1920x1080/25p	1920x1080/25p	Disable
1440x1080 25p			
720x576 50i 4:3 (D1, DVD)	720x576/50i → 720x576/50p*1	720x576/50i	720x576/50i
720x576 50i 16:9 (D1, DVD)			
720x576 50i 4:3 (DV)			
720x576 50i 16:9 (DV)			
720x576 25p over 50i 4:3			
720x576 25p over 50i 16:9			
1920x1080 23.98p over 59.94i	1920x1080/59.94i	1920x1080/59.94i or 720x486/59.94i*2	720x486/59.94i*2
1440x1080 23.98p over 59.94i			
1280x1080 23.98p over 59.94i			
1280x1080 23.98p over 59.94p	1280x720/59.94p	1280x720/59.94p or 720x486/59.94i*2	720x486/59.94i*2
960x1080 23.98p over 59.94p			
1920x1080 23.98p	1920x1080/23.98p	1920x1080/23.98p	Disabled
1440x1080 23.98p			
1280x1080 23.98p			
720x486 23.98p over 59.94i 4:3	720x480/59.94i → 720x480/59.94p*1	720x486/59.94i	720x486/59.94i
720x486 23.98p over 59.94i 16:9			
720x480 23.98p over 59.94i 4:3			
720x480 23.98p over 59.94i 16:9			

\*1 If the attached HDMI monitor cannot receive an interlaced signal, STORM Mobile automatically converts that interlaced signal to progressive.

\*2 Downconverted.

**PACKAGE CONTENTS**

**STORM Mobile Bay Unit:**

- Bay unit
- PCI Express card
- Connector cable
- STORM Mobile Setup Guide



**STORM Mobile Breakout Box with PCIe Card:**

- External unit
- PCI Express card
- Connector cable
- STORM Mobile Setup Guide



**STORM Mobile Breakout Box with ExpressCard/34 Card:**

- External unit
- ExpressCard/34 card
- Connector cable
- STORM Mobile Setup Guide



Note: In configurations where EDIUS Pro 6.5 is included (see Ordering Information), the software is provided as an EDIUS Pro 6.5 software installation disc set (DVD-ROM). Windows 7 (32-bit or 64-bit) is required.

**ORDERING INFORMATION**

**STORM MOBILE BAYP**  
*(Available in EMEA and APAC only)*  
STORM Mobile 5-inch bay unit + PCIe card

**STORM MOBILE BAYPE6**  
*(Available in EMEA and APAC only)*  
STORM Mobile 5-inch bay unit + PCIe card + EDIUS Pro 6.5

**STORM MOBILE BOB**  
*(Available in EMEA and APAC only)*  
STORM Mobile breakout box unit

**STORM MOBILE BOBE6**  
*(Available in EMEA and APAC only)*  
STORM Mobile breakout box unit + EDIUS Pro 6.5

**STORM MOBILE BOBP6**  
*(Available in APAC only)*  
STORM Mobile breakout box unit + PCIe card + EDIUS Pro 6.5

**STORM MOBILE BOBXE6**  
*(Available in APAC only)*  
STORM Mobile breakout box unit + ExpressCard/34 card + EDIUS Pro 6.5 + AC adapter

**STORM MOBILE BOBPXE6**  
*(Available in North America only— This is the only version available in North America)*  
STORM Mobile breakout box unit + PCIe card + ExpressCard/34 card + EDIUS Pro 6.5 + AC adapter

**STORM MOBILE P**  
*(Available in EMEA and APAC only)*  
STORM Mobile PCIe card ONLY

**STORM MOBILE X**  
*(Available in EMEA and APAC only)*  
STORM Mobile ExpressCard/34 card ONLY + AC adapter

**Note:** EDIUS Pro 6.5 requires Windows 7 (32-bit or 64-bit). EDIUS Pro 6.5 software requires that all previous versions of EDIUS software be uninstalled.

**MAXIMIZE AND OPTIMIZE YOUR INVESTMENT**



With program production and distribution becoming ever more complex and affecting business issues on a daily basis, you need a trusted partner that understands those complexities and how to convert them into opportunities. Grass Valley's team of experienced engineers and system integrators can help you turn your challenges into opportunities in the most efficient and cost-effective way possible, from system design all the way through to commissioning. Grass Valley Professional Services helps you to:

**Define:** We consult with you to help define your business and technology requirements and then design the right solutions to meet them.

**Deploy:** Our professional service organization, backed by proven project management methodologies, can take you from design through deployment, commissioning, and training.

**Support:** We offer a complete portfolio of support services to keep your systems running, and help manage your long-term maintenance needs.

For information about Grass Valley, please visit [www.grassvalley.com](http://www.grassvalley.com).

Join the Conversation at **GrassValleyLive** on Facebook, Twitter, and YouTube.

